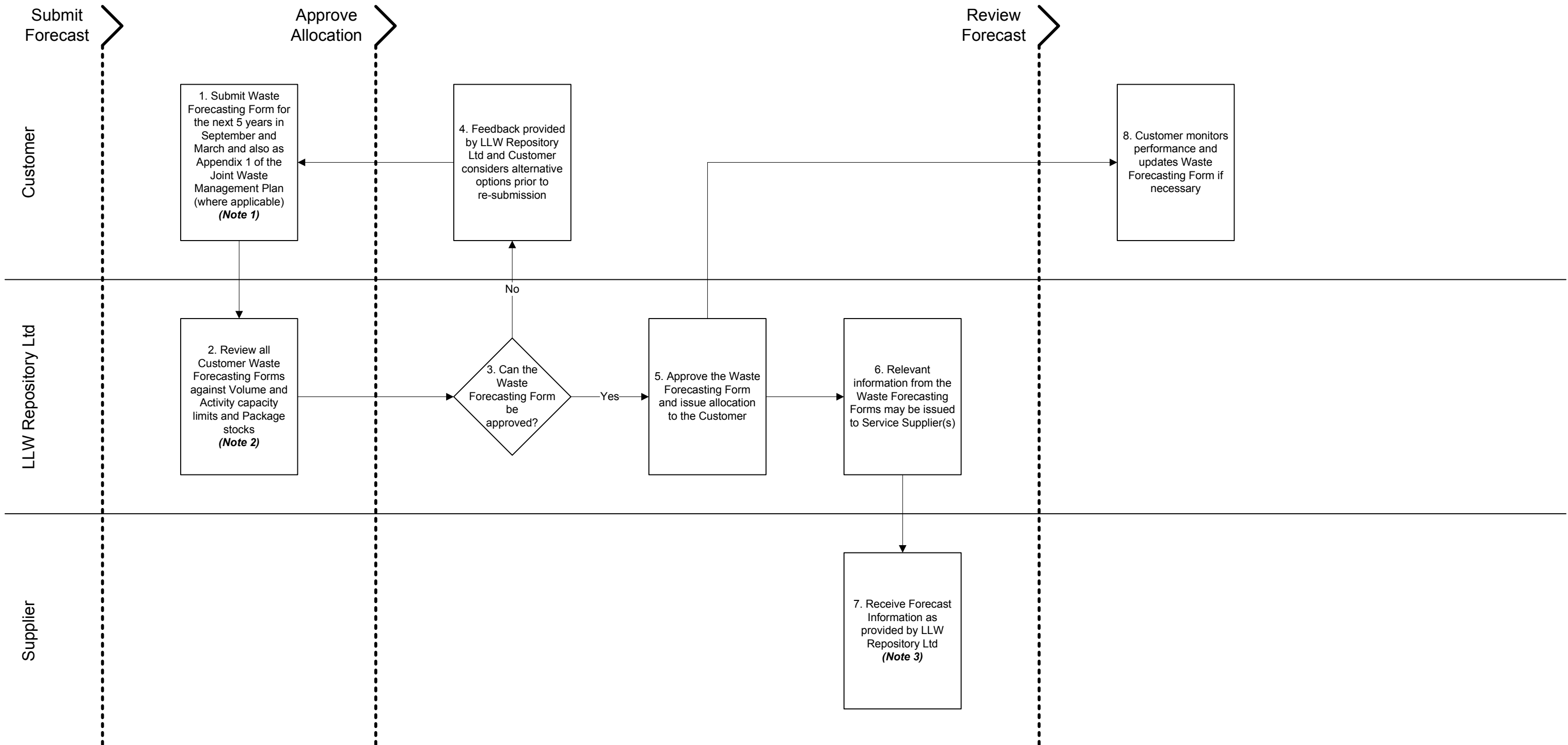


## Waste Acceptance Procedure



**Notes:**

1. A Waste Forecasting Form is submitted twice a year, once before 1<sup>st</sup> October and once before 1<sup>st</sup> April. This also needs to be submitted as Appendix 1 of the Joint Waste Management Plans (where applicable). Customer must ensure that data on the forecast and the appendix align.
2. In order to identify areas of oversubscribed allocation, LLW Repository Ltd will compare the sum of all Waste Forecasts against the Repository's annual radiological capacity limits, prior to approving a request from a specific Customer.
3. Suppliers include those providing Packaging Services. LLW Repository Ltd encourage Customers to place packaging orders as early as possible to ensure stock availability. Orders should be placed in accordance with the Packaging Services Process.