

# September 2017 Waste Metric Dashboard

Period 6 : 27th August to 30th September FY 17/18

## UK Waste Diversion

The National Waste Programme aims to communicate progress in the implementation of the Waste Hierarchy and the Nuclear Industry Strategy for Low Level Waste Management across the UK. This dashboard shows key metrics that demonstrate the successful diversion of waste away from direct disposal and the optimal use of key national assets, such as LLWR and waste treatment facilities around the UK, typically based on delivery of Joint Waste Management Plans (JWMPs). The objective is to encourage transparency and communicate progress to all stakeholders.

### NDA Site Summary YTD

These graphs are a summary of the cumulative progress to date against the combined JWMP targets\*. These numbers do not capture VLLW disposed of on site.

**M Metallic Treatment:**

	Yearly Target	Actual YTD
Sellafield Ltd	2200	1199
Magnox Ltd	641	639
LLWR Ltd	0	58
<b>Total:</b>	<b>2841</b>	<b>1896</b>

352 te via framework

**C Combustible Treatment:**

	Yearly Target	Actual YTD
Sellafield Ltd	1200	963
Magnox Ltd	1038	688
LLWR Ltd	185	97
<b>Total:</b>	<b>2422</b>	<b>1748</b>

1742 m<sup>3</sup> via framework

**V VLLW Disposal:**

	Yearly Target	Actual YTD
Sellafield Ltd <sup>1</sup>	200	547
Magnox Ltd	5492	1186
LLWR Ltd	5	2
<b>Total:</b>	<b>5697</b>	<b>1735</b>

1736 m<sup>3</sup> via framework

### Magnox Ltd

These graphs show the cumulative actual waste diverted by Magnox Ltd against their JWMP targets in the Year to Date (YTD).

**M Metallic Treatment:**

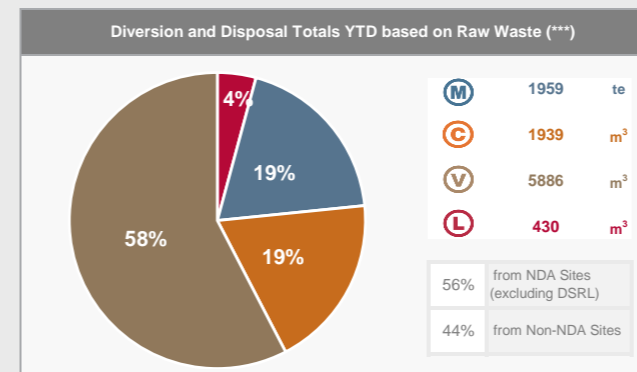
	Yearly Target	Actual YTD
Onsite treatment	44	70
Via framework	121	31
Out of Scope	476	538
<b>Total:</b>	<b>641</b>	<b>639</b>

**C Combustible Treatment:**

	Yearly Target	Actual YTD
Onsite treatment	0	0
Via framework	1038	688
Out of Scope	0	0
<b>Total:</b>	<b>1038</b>	<b>688</b>

**V VLLW Disposal:**

	Yearly Target	Actual YTD
Onsite disposal	0	0
Via framework	5122	1186
Out of Scope	370	0
<b>Total:</b>	<b>5492</b>	<b>1186</b>



### Non-NDA Site Summary YTD

These graphs are a summary of the cumulative diversions to date from Non NDA sites.

**M Metallic Treatment:**

	Yearly Forecast	Actual YTD
Onsite treatment	N/A	0
Via framework	N/A	63
Out of Scope	N/A	0
<b>Total:</b>	<b>N/A</b>	<b>63</b>

**C Combustible Treatment:**

	Yearly Forecast	Actual YTD
Onsite treatment	N/A	0
Via framework ***	N/A	191
Out of Scope	N/A	0
<b>Total:</b>	<b>N/A</b>	<b>191</b>

**V VLLW Disposal:**

	Yearly Forecast	Actual YTD
Onsite disposal	N/A	0
Via framework	N/A	4150
Out of Scope	N/A	0
<b>Total:</b>	<b>N/A</b>	<b>4150</b>



### Non-NDA Sites (YTD)\*\*\*\*

This table shows the cumulative actual waste diverted\*\*\* by non-NDA sites in the YTD

Non-NDA Site(s)	<b>M</b> (te)	<b>C</b> (m <sup>3</sup> )	<b>V</b> (m <sup>3</sup> )
Cyclife <sup>(1)</sup>	0	0	0
AWE Aldermaston	60	0	140
EDF Energy	0	0	0
Urenco UK	0	0	75
Tradebe Inutec Ltd	0	0	60
Capenhurst Nuclear Services	3	185	3214
Unitech	0	0	0
Others	0	6	660

The values above are inclusive of material diverted through direct contracts:  
0 te Metallic, 185 m<sup>3</sup> Combustible, 0 m<sup>3</sup> VLLW



### LLWR Ltd

These graphs show the cumulative actual waste diverted by Low Level Waste Repository Ltd against their JWMP targets in the YTD.

**M Metallic Treatment:**

	Yearly Target	Actual YTD
Onsite	0	0
Via framework	0	11
Out of Scope	0	47
<b>Total:</b>	<b>0</b>	<b>58</b>

**C Combustible Treatment:**

	Yearly Target	Actual YTD
Onsite	0	0
Via framework	185	91
Out of Scope	0	6
<b>Total:</b>	<b>185</b>	<b>97</b>

**V VLLW Disposal:**

	Yearly Target	Actual YTD
Onsite	0	0
Via framework	5	2
Out of Scope	0	0
<b>Total:</b>	<b>5</b>	<b>2</b>

### Sellafield Ltd

These graphs show the cumulative actual waste diverted by Sellafield Ltd against their JWMP targets in the YTD.

**M Metallic Treatment:**

	Yearly Target	Actual YTD
Onsite treatment	1500	891
Via framework	700	309
Out of Scope	0	0
<b>Total:</b>	<b>2200</b>	<b>1199</b>

**C Combustible Treatment:**

	Yearly Target	Actual YTD
Onsite treatment	0	0
Via framework	1200	963
Out of Scope	0	0
<b>Total:</b>	<b>1200</b>	<b>963</b>

**V VLLW Disposal:**

	Yearly Target	Actual YTD
Onsite disposal	0	2126
Via framework	200	547
Out of Scope	0	0
<b>Total:</b>	<b>200</b>	<b>547</b>

### ILW → LLW Re-Classification

This table shows the actual volume of waste re-classified from ILW to LLW in the YTD.

SLC	Actual Volume Re-Classified YTD (m <sup>3</sup> )
Magnox Ltd	-
Sellafield Ltd	-
LLWR Ltd	-
Dounreay	-
Non-NDA estate	-
<b>Total</b>	<b>0</b>

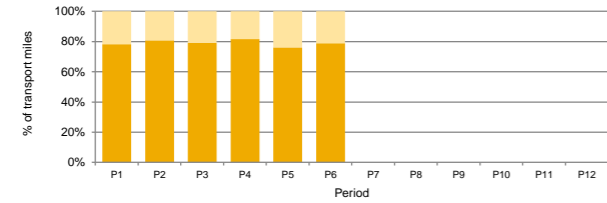
Key: ■ Cumulative Actual Waste diverted, ○ Target / Forecast

<sup>1</sup> Actuals/Target YTD only applies to VLLW via the framework

**Transport and Packaging**

**Utilisation of Transport Fleet**

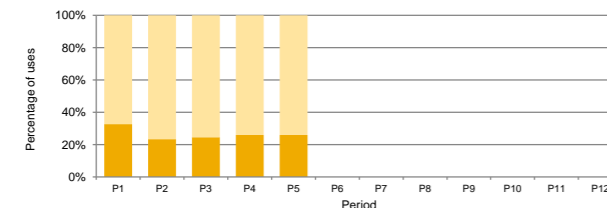
This graph gives the relative percentage for empty miles (miles transporting empty containers) and utilised miles (miles transporting containers holding waste). A high utilisation % shows transport assets being used effectively.



YTD Miles	YTD Average
103,407	79%
27,258	21%

**Package Re-use**

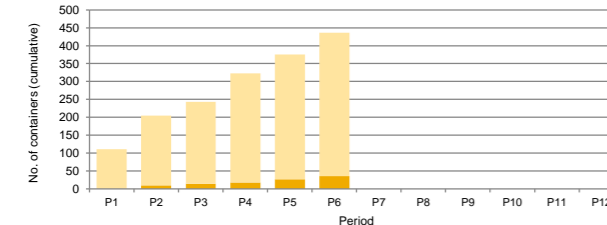
This graph shows, of the total number of containers transported, the percentage of packages that were a re-used container. A high re-use % shows transport assets being used effectively.



YTD (no.)	YTD Average
340	33%
942	67%

**Road vs. Rail Transports**

This graph shows of the total number of containers transported, which were by rail and which were by road. This includes rail shipments from Sellafield to LLWR.

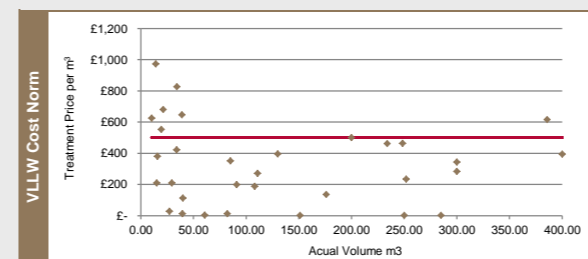
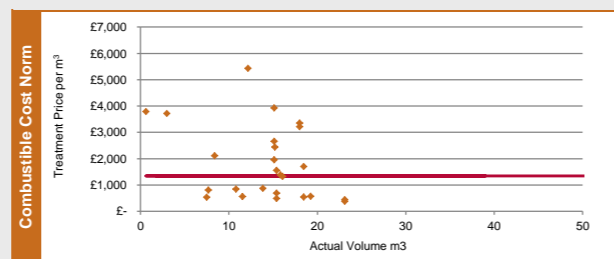
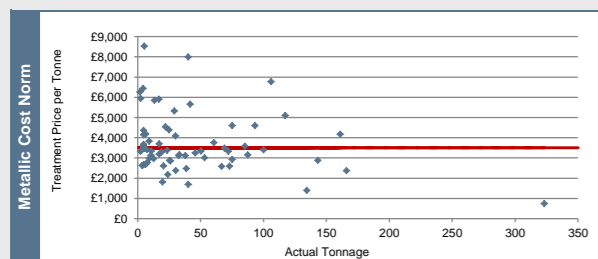


% Container No.s	% Container Miles
8%	1%
92%	99%

**Cost Norms**

The three graphs below show the cost norms with the actual price per contract for comparison.

Key: — Cost Norm    ♦♦♦ Actual Price



**LLW Disposals and LLWR Vault Capacity**

**LLW Disposals**

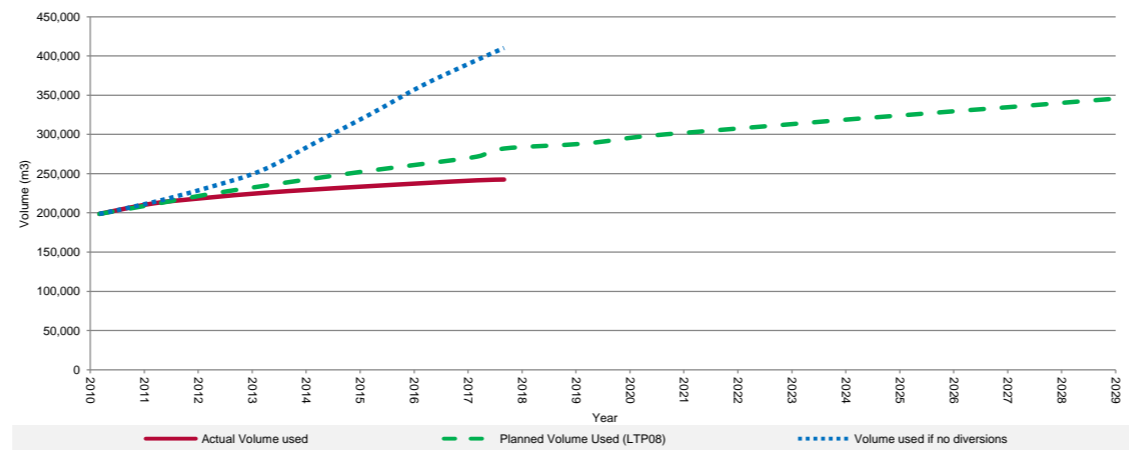
This table gives the number of LLW containers disposed of as LLW in the YTD.

Site(s)	No. of Containers sent for LLWR Disposal in the YTD												Total
	Period 1	Period 2	Period 3	Period 4	Period 5	Period 6	Period 7	Period 8	Period 9	Period 10	Period 11	Period 12	
<b>NDA</b>													
Sellafield Ltd	0	10	6	3	9	9	0	0	0	0	0	0	37
Magnox Ltd	0	0	0	1	0	3							4
LLWR Ltd	0	0	0	0	0	0							0
Cyclife	0	0	0	0	0	0							0
AWE Aldermaston	0	0	0	0	0	0							0
EDF Energy	0	0	0	0	0	0							0
Urenco UK	0	0	0	0	0	0							0
Tradebe Inutec Ltd	0	0	0	0	0	0							0
Capenhurst Nuclear Services	0	0	0	0	2	0							2
Unitech	0	0	0	0	0	0							0
Others	0	0	0	0	0	0							0
<b>TOTAL</b>	<b>0</b>	<b>10</b>	<b>6</b>	<b>4</b>	<b>11</b>	<b>12</b>	<b>0</b>	<b>0</b>	<b>0</b>	<b>0</b>	<b>0</b>	<b>0</b>	<b>43</b>

Dounreay Vaults	No. of Containers sent disposed of at Dounreay in the YTD												Total
	Period 1	Period 2	Period 3	Period 4	Period 5	Period 6	Period 7	Period 8	Period 9	Period 10	Period 11	Period 12	
Dounreay - Main Vault	0	0	16	0	0	0							16
Dounreay - Demolition Vault	0	0	0	0	0	0							0

**Total Impact of Diversions on LLWR Site**

This graph compares the actual site capacity used, against the planned capacity according to Life Time Plan (LTP) 08, and the capacity that would have been used if no treatment options were utilised. Actual disposals are based on the number of containers received by LLWR per year. To convert between raw volume and container number it has been assumed that one container takes up 22.8m³ of vault space. For metallic wastes it has been assumed that 10te is contained within a HHISO. This graph starts in April 2010 when the new LLWR waste services contract was introduced. Up to this point 266,180m³ of waste had been consigned to LLWR for disposal. For the purpose of this graph these values assume no secondary waste is received by LLWR from treatment providers.



Total volume saved by diversions: **167,746 m³**      Total no. of equivalent HHISO containers saved by diversion: **7,357**

**Usage of Waste Routes**

**Route Status**

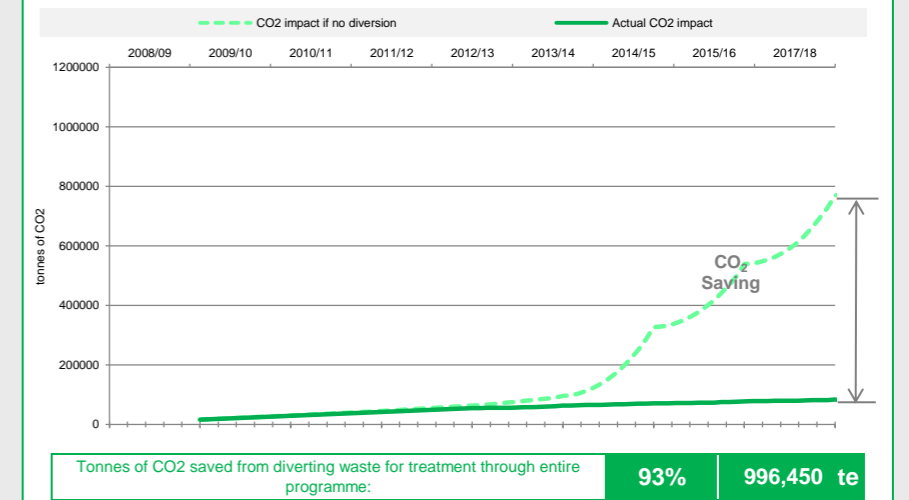
This table shows the routes available to each of the sites, which have been utilised and which are yet to be utilised. This date is reflective of waste route usage from 2008 to the YTD.

SLC	Site	M	G	V	L
LLWR	LLWR	●	●	●	●
DSRL	Dounreay	●	●	●	●
Sellafield Ltd	Sellafield	●	●	●	●
Magnox Ltd	Berkeley	●	●	●	●
	Bradwell	●	●	●	●
	Chapelcross	●	●	●	●
	Dungeness A	●	●	●	●
	Hinkley Point A	●	●	●	●
	Hunterston A	●	●	●	●
	Oldbury	●	●	●	●
	Sizewell A	●	●	●	●
	Trawsfynydd	●	●	●	●
	Wylfa	●	●	●	●
Harwell	●	●	●	●	
Winfrith	●	●	●	●	

Key: ● Route not open    ● Route in use  
● Route available    ✕ Recent status change

**Environment**

**Environmental Impact**



**Dashboard Commentary:**

**Notes:**

\* JWMP targets have been revised in P1 to reflect version 12 submissions  
 \*\* Diversion totals from Non NDA include framework and non framework consignments.  
 \*\*\* Metallic Waste (te) to (m3) Conversion: 1.00 te/m3 (assuming 10te per HHISO)  
 \*\*\*\*for Non NDA sites, "zero" diversion may either reflect no diversion or diversion via direct contracts or self-performance which is not reported to LLWR at this time