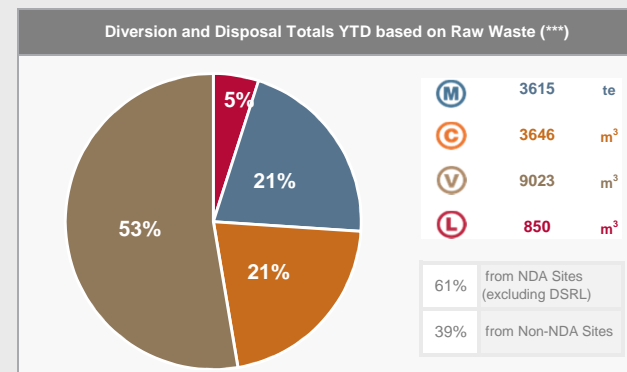


February 2018 Waste Metric Dashboard

Period 11 : 28th January to 24th February FY 17/18

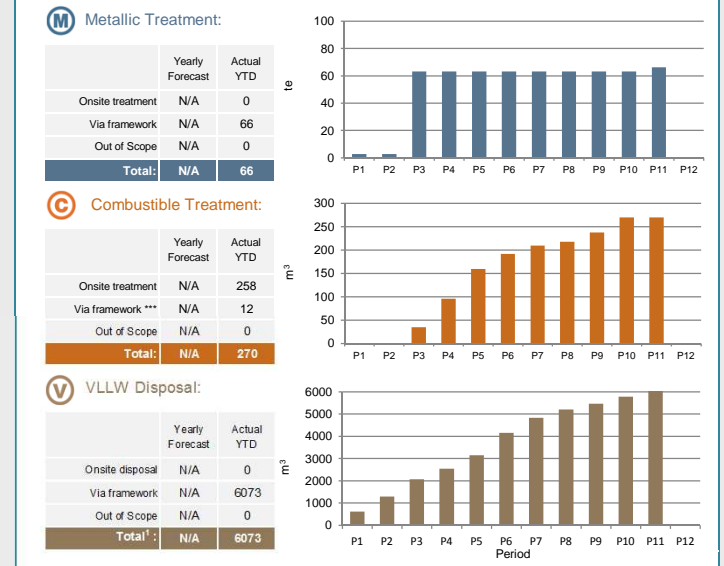
UK Waste Diversion

The National Waste Programme aims to communicate progress in the implementation of the Waste Hierarchy and the Nuclear Industry Strategy for Low Level Waste Management across the UK. This dashboard shows key metrics that demonstrate the successful diversion of waste away from direct disposal and the optimal use of key national assets, such as LLWR and waste treatment facilities on sites around the UK, typically based on delivery of Joint Waste Management Plans (JWMPs). The objective is to encourage transparency and communicate progress to all stakeholders.



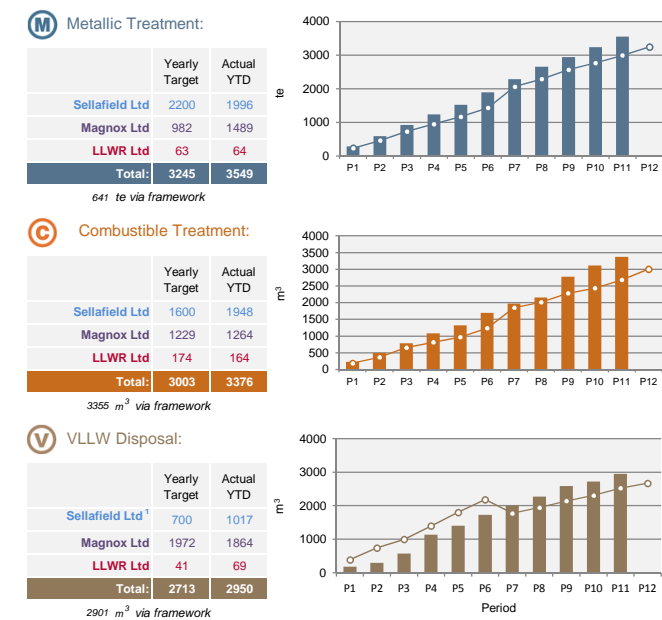
Non-NDA Site Summary YTD

These graphs are a summary of the cumulative diversions to date from Non NDA sites.



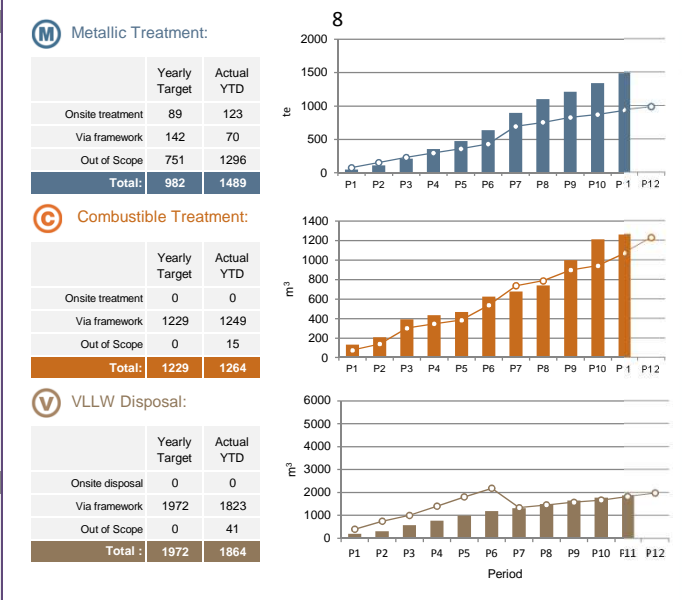
NDA Site Summary YTD

These graphs are a summary of the cumulative progress to date against the combined JWMP targets*. These numbers do not capture VLLW disposed of on site.



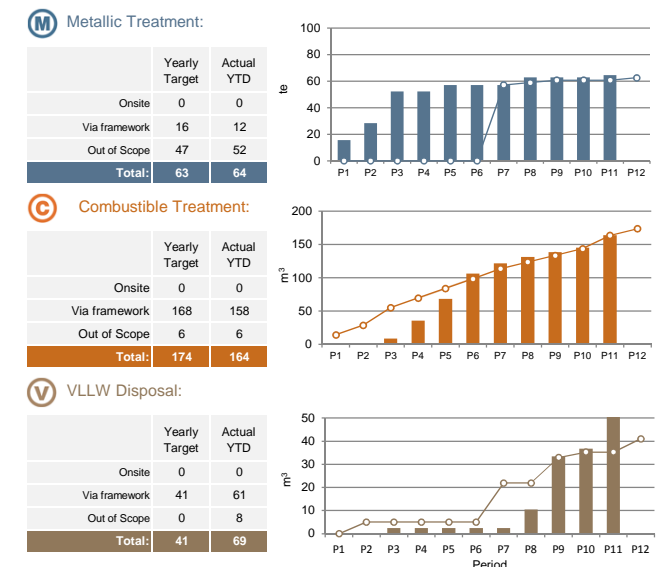
Magnox Ltd

These graphs show the cumulative actual waste diverted by Magnox Ltd against their JWMP targets in the Year to Date (YTD).



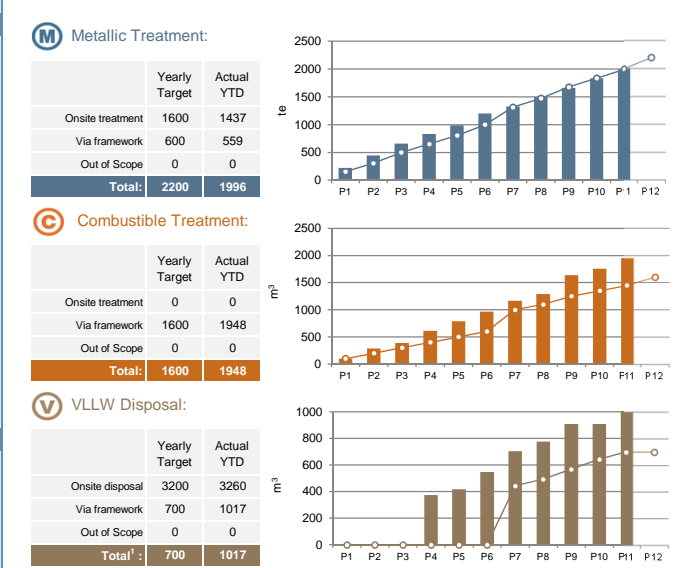
LLWR Ltd

These graphs show the cumulative actual waste diverted by Low Level Waste Repository Ltd against their JWMP targets in the YTD.



Sellafield Ltd

These graphs show the cumulative actual waste diverted by Sellafield Ltd against their JWMP targets in the YTD.



¹ Actuals/Target YTD only applies to VLLW via the framework



Non-NDA Sites (YTD)****

This table shows the cumulative actual waste diverted*** by non-NDA sites in the YTD

Non-NDA Site(s)	M (te)	C (m ³)	V (m ³)
Cyclife ⁽¹⁾	0	0	0
AWE Aldermaston	60	6	193
EDF Energy	0	0	0
Urenco UK	0	0	328
Tradebe Intec Ltd	0	0	71
Capenhurst Nuclear Services	6	258	4215
Unitech	0	0	0
Others	0	6	1266

The values above are inclusive of material diverted through direct contracts:
0 te Metallic 0 m³ Combustible 0 m³ VLLW



ILW → LLW Re-Classification

This table shows the actual volume of waste re-classified from ILW to LLW in the YTD.

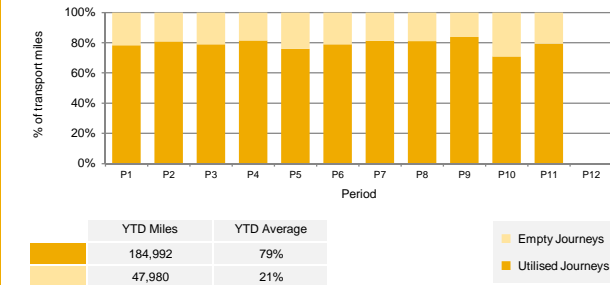
SLC	Actual Volume Re-Classified YTD (m ³)
Magnox Ltd	-
Sellafield Ltd	-
LLWR Ltd	-
Dounreay	-
Non-NDA estate	-
Total	0

Key: ■ Cumulative Actual Waste diverted —○— Target / Forecast

Transport and Packaging

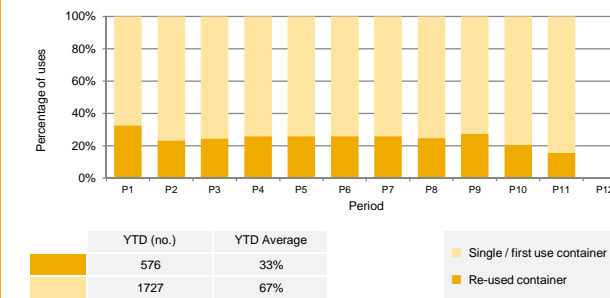
Utilisation of Transport Fleet

This graph gives the relative percentage of empty miles (miles transporting empty containers) and utilised miles (miles transporting containers holding waste). A high utilisation % shows transport assets being used effectively.



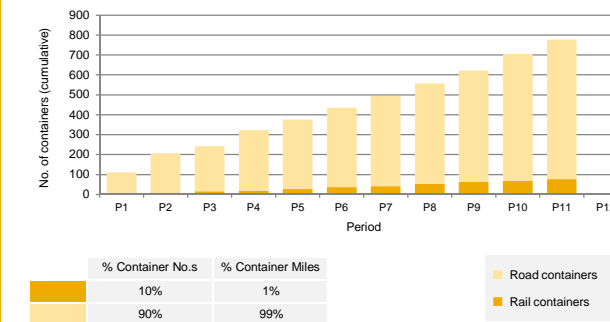
Package Re-use

This graph shows, of the total number of containers transported, the percentage of packages that were a re-used container. A high re-use % shows transport assets being used effectively.



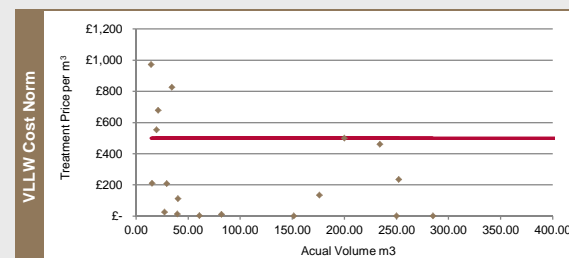
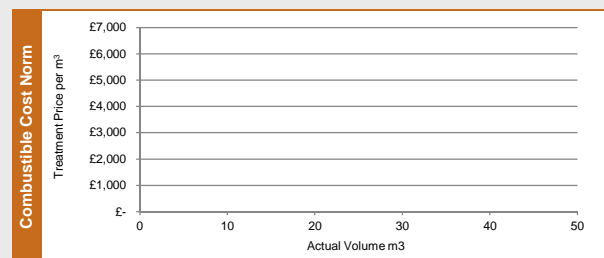
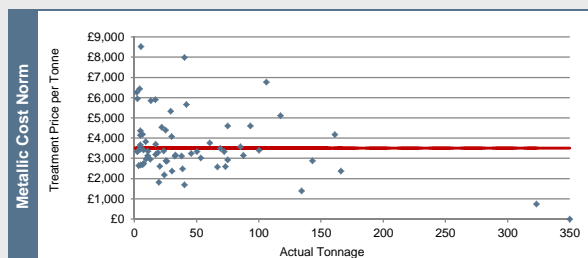
Road vs. Rail Transports

This graph shows the total number of containers transported, which were by rail and which were by road. This includes rail shipments from Sellafield to LLWR.



Cost Norms

The three graphs below show the cost norms with the actual price per contract for comparison.



LLW Disposals and LLWR Vault Capacity

LLW Disposals

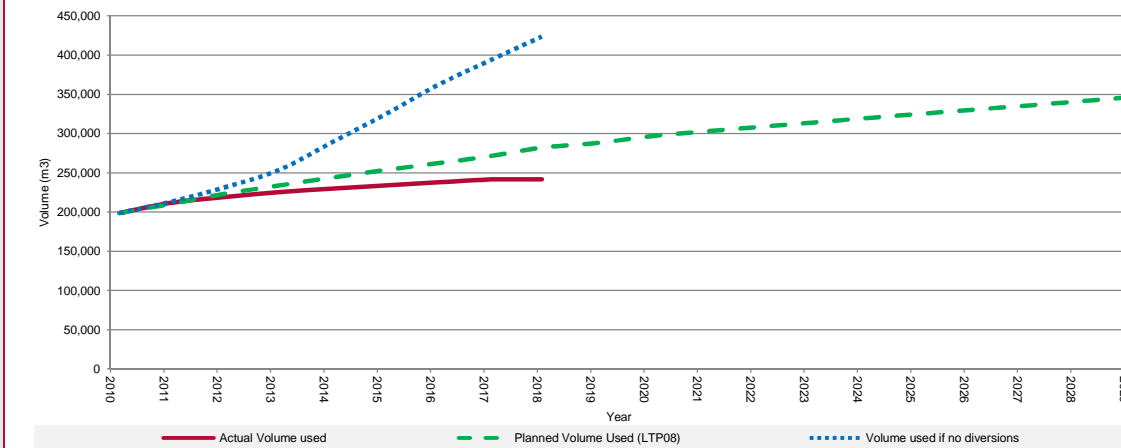
This table gives the number of LLW containers disposed of as LLW in the YTD.

Site(s)	No. of Containers sent for LLWR Disposal in the YTD												Total
	Period 1	Period 2	Period 3	Period 4	Period 5	Period 6	Period 7	Period 8	Period 9	Period 10	Period 11	Period 12	
NDA													
Sellafield Ltd	0	10	6	3	9	9	6	10	6	4	11		74
Magnox Ltd	0	0	0	1	0	3	0	0	2	0	0		6
LLWR Ltd	0	0	0	0	0	0	0	0	0	0	0		0
Cyclife	0	0	0	0	0	0	0	0	0	0	0		0
Non-NDA													
AWE Aldermaston	0	0	0	0	0	0	0	0	0	0	0		0
EDF Energy	0	0	0	0	0	0	0	0	0	0	1		1
Urenco UK	0	0	0	0	0	0	0	0	0	0	0		0
Tradebe Inutek Ltd	0	0	0	0	2	0	0	0	1	1	0		4
Capenhurst Nuclear Services	0	0	0	0	0	0	0	0	0	0	0		0
Unitech	0	0	0	0	0	0	0	0	0	0	0		0
Others	0	0	0	0	0	0	0	0	0	0	0		0
TOTAL	0	10	6	4	11	12	6	10	9	5	12	0	85

Dounreay Vaults	No. of Containers sent disposed of at Dounreay in the YTD												Total
	Period 1	Period 2	Period 3	Period 4	Period 5	Period 6	Period 7	Period 8	Period 9	Period 10	Period 11	Period 12	
Dounreay - Main Vault	0	0	16	0	2	8	3	2	2	0	0		33
Dounreay - Demolition Vault	0	0	0	0	0	0	0	0	0	0	0		0

Total Impact of Diversions on LLWR Site

This graph compares the actual site capacity used, against the planned capacity according to Life Time Plan (LTP) 08, and the capacity that would have been used if no treatment options were utilised. Actual disposals are based on the number of containers received by LLWR per year. To convert between raw volume and container number it has been assumed that one container takes up 22.8m³ of vault space. For metallic wastes it has been assumed that 10te is contained within a HHISO. This graph starts in April 2010 when the new LLWR waste services contract was introduced. Up to this point 266,180m³ of waste had been consigned to LLWR for disposal. For the purpose of this graph these values assume no secondary waste is received by LLWR from treatment providers.



Total volume saved by diversions: **181,832 m³** Total no. of equivalent HHISO containers saved by diversion: **7,975**

Usage of Waste Routes

Route Status

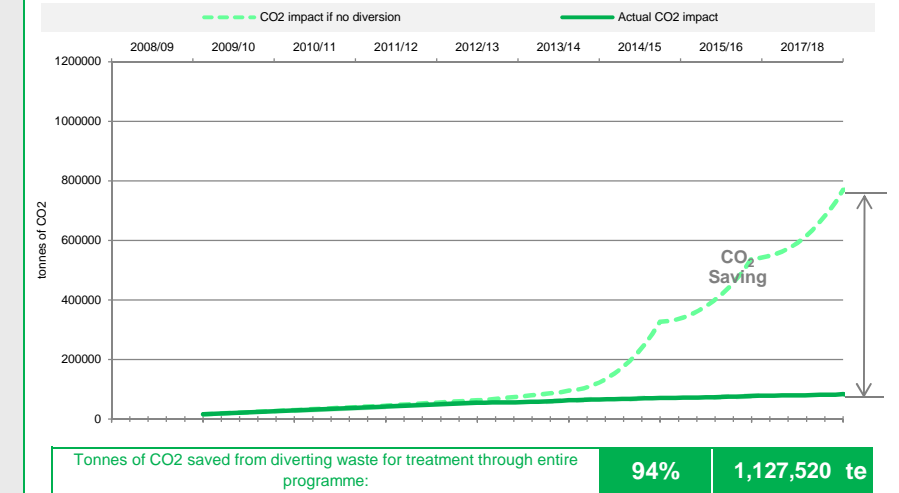
This table shows the routes available to each of the sites, which have been utilised and which are yet to be utilised. This date is reflective of waste route usage from 2008 to the YTD.

SLC	Site	M	C	V	L
LLWR	LLWR	●	●	●	●
DSRL	Dounreay	●	●	●	●
Sellafield Ltd	Sellafield	●	●	●	●
	Berkeley	●	●	●	●
	Bradwell	●	●	●	●
	Chapelcross	●	●	●	●
	Dungess A	●	●	●	●
	Hinkley Point A	●	●	●	●
Magnox Ltd	Hunterston A	●	●	●	●
	Oldbury	●	●	●	●
	Sizewell A	●	●	●	●
	Trwysfynydd	●	●	●	●
	Wylfa	●	●	●	●
	Harwell	●	●	●	●
	Winfrith	●	●	●	●

SLC	Site	M	C	V	L
	Dungess B	●	●	●	●
	Hartlepool	●	●	●	●
	Heysham 1	●	●	●	●
	Heysham 2	●	●	●	●
EDF - Energy	Hinkley Point B	●	●	●	●
	Hunterston B	●	●	●	●
	Sizewell	●	●	●	●
	Torness	●	●	●	●
	RRMPOL	●	●	●	●
	HMNB Rosyth	●	●	●	●
MoD Sites	HMNB Devonport	●	●	●	●
	HMNB Clyde	●	●	●	●
	AWE Aldermaston	●	●	●	●
	Barrow	●	●	●	●
	Eskmeals	●	●	●	●
	Urenco UK Ltd	●	●	●	●
	Capenhurst Nuclear Services (CNS)	●	●	●	●
	GE Healthcare Ltd Amersham	●	●	●	●
	UKAEA Culham JET Site	●	●	●	●
	Medical Research Council	●	●	●	●

Environment

Environmental Impact



Dashboard Commentary:

Notes:

* Targets have been revised from P6 to reflect JWMP Version 13 submissions.
 ** Diversion totals from Non NDA include framework and non framework consignments.
 *** Metallic Waste (te) to (m³) Conversion: 1.00 te/m³ (assuming 10te per HHISO)
 ****for Non NDA sites, "zero" diversion may either reflect no diversion or diversion via direct contracts or self-performance which is not reported to LLWR at this time